

Schedule of Rates

Please complete your request or application online at www.marbloroughlines.co.nz

Note: all rates are **exclusive** of GST

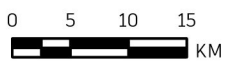
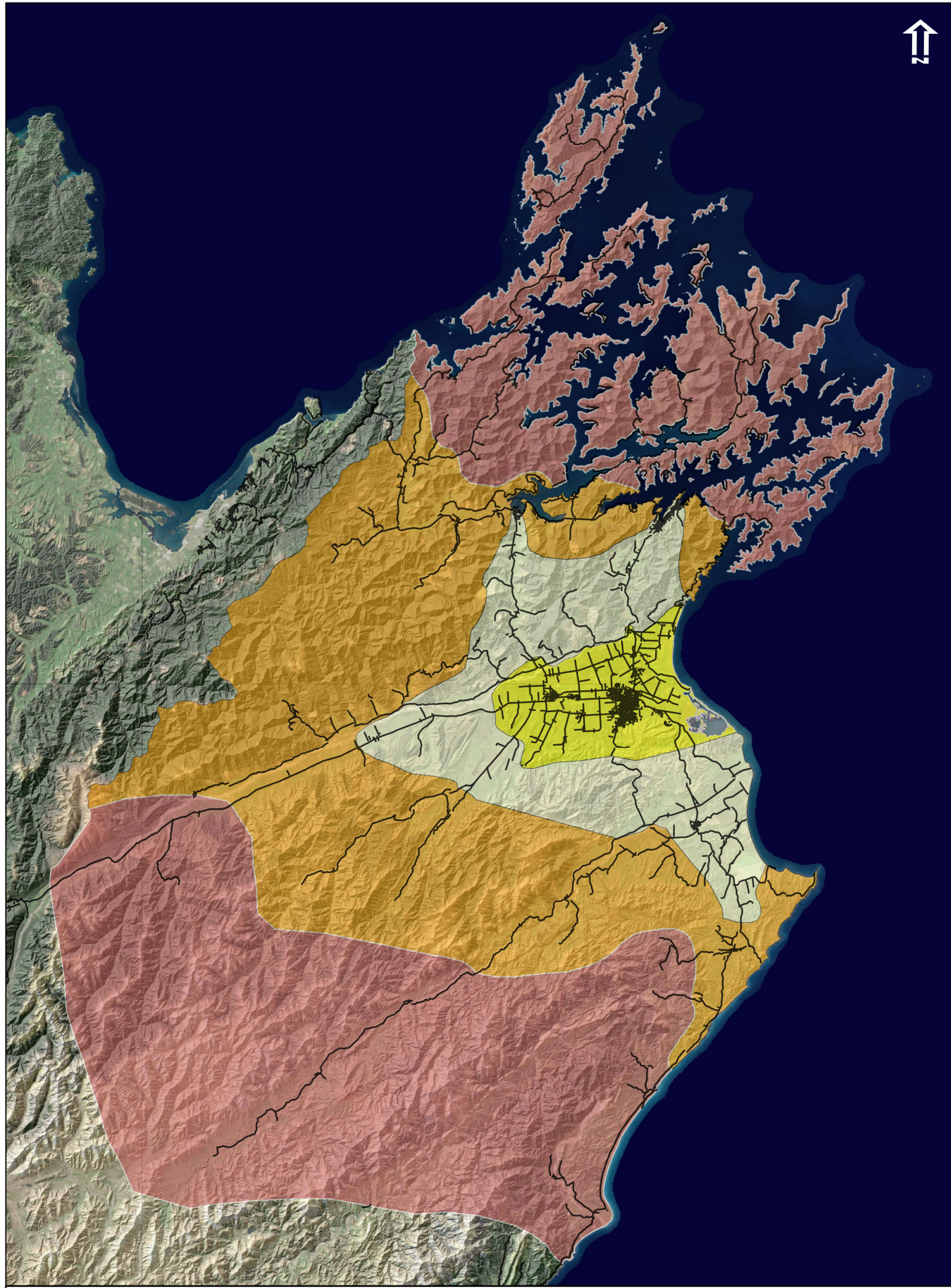
Note: all rates are **Exclusive of GST**

	Service Location			
<i>Working Near our Network</i>	Zone 1.	Zone 2.	Zone 3.	Zone 4.
Customer Installation Faults ¹	\$50.00	\$100.00	\$180.00	POA
Close Approach Authority Permit ²	No Charge			POA
Safety Disconnect - Pole Fuse Only ³	No Charge		\$180.00	POA
Safety Disconnect with Temporary Removal of Lines ⁴	POA			
Cable Location ⁵	\$180.00	\$240.00	\$285.00	POA
<i>Connect or Alter my Supply</i>				
Fuse Upgrade / Fuse Downgrade	\$120.00	\$180.00	\$285.00	POA
Certificate of Verification Inspection (COV)	\$180.00	\$240.00	\$285.00	POA
Livening Inspection including issuance of ROI				
Decommission - meter removal only				
Decommission with removal of lines	POA			
Connection Application Fee	\$250.00			
Cost Estimates	POA			
<i>Connect Distributed Generation</i>				
Distributed Generation Application Fees ⁶	POA			
<i>Field Services</i>				
Service Crew Charges	POA			
Traffic Management	POA			
High Load Shift	POA			

- ¹ If MLL is called out for a part or no power, and the fault is found to be on the customer installation (not a network fault), the customer will be liable for costs incurred.
- ² Close Approach Authority Permits are subject to resource availability and may be delayed due to weather events or fault volumes. At least **3 working days notice** is required to qualify for the zone 1/2/3 zero charge.
- ³ Safety disconnections and reconnections are subject to resource availability and may be delayed due to weather events or fault volumes. At least **3 working days notice** is required to qualify for the zone 1/2 zero charge, disconnection point must be a low voltage connection, and serve a single property only.
- ⁴ High voltage (HV) disconnections, low voltage (LV) disconnections affecting multiple parties, or LV disconnections that require the temporary removal of a service line require 20-business days notification. An alternative date must be supplied and be at least ten-business days after the proposed date. These would require MLL to prepare a cost estimate based on time, mileage and materials.
- ⁵ A cable location allows for up to one-hour onsite, and up to 100m of cable locating. Any additional time onsite will be charged. A minimum of **3 working days notice** is required to book a cable location.
- ⁶ Application fees for Distributed Generation are prescribed in Schedule 6.5 of the Electricity Industry Participation Code 2010.

Note: if work is to be done outside of our normal business hours (7.30am-4.00pm Monday-Friday excluding public holidays), or if **the minimum prescribed time for a request is not met**, an **additional fee of \$200.00 + GST** will be applied to the fixed rates above. If the work is to be done as an emergency event (i.e., fire) MLL may waive any fees.

All prices are **exclusive of GST** and are effective from 1 June 2022, prices shown are minimums. For service location zones 1,2,3,4 refer to the service zone map for details. The map is not related in any way to MLL's remote areas map which is used to determine discount payments and low fixed charge consumer eligibility. Due to the remote location of zone 4, MLL may prepare an estimate and charge on actual time, mileage and materials.



MLL Pricing Zones for Field Services

This map is to supplement the MLL field services schedule of rates

Legend:

- | | | |
|--|--|--|
|  Zone 1 |  Zone 3 |  Road |
|  Zone 2 |  Zone 4 | |